

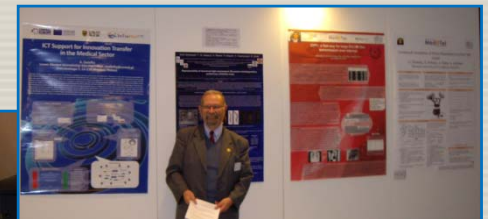
6-8 APRIL 2011

Med@Tel

LUXEMBOURG
BY ISFTEH



THE INTERNATIONAL eHEALTH, TELEMEDICINE AND HEALTH ICT FORUM FOR EDUCATION, NETWORKING AND BUSINESS



Med-e-Tel is

2

- An official event of the International Society for Telemedicine & eHealth (ISfTeH), the international federation of national associations who represent their country's Telemedicine and eHealth stakeholders
- A highly specialized international education, business and networking forum
- Bringing manufacturers and suppliers of Telemedicine/eHealth equipment and services together with buyers, healthcare professionals, representatives of international organizations and associations, institutional decision makers and policy makers from all over the world
- Providing attendees with hands-on experience and knowledge about currently available products, technologies and applications
- A forum where state-of-the-art products, services, ideas and projects are presented and discussed
- A nesting place for development of existing relationships and establishing new collaboration and partnerships between healthcare professionals, researchers, industry representatives and government agencies



Format

3

- Exhibition
- Educational program
 - Plenary session
 - Parallel sessions
 - Poster sessions
 - Satellite symposia
 - Workshops
 - Project meetings
 - ...
- Media corner

The screenshot shows the homepage for Med@Tel Luxembourg, organized by ISfTeH, held from 6-8 April 2011. The page features a navigation menu with links for Home, News, Schedule, and Contact. Below the navigation, there are tabs for Sponsor/Exhibitor, Visitor, Educational Program, Hotel Travel, Press Center, Partners, Proceedings, and Knowledge Resources. The main content area includes the Med@Tel logo, the event title "THE INTERNATIONAL eHEALTH, TELEMEDICINE AND HEALTH ICT FORUM For Education, Networking and Business", and a brief description of the event as an official event of the International Society for Telemedicine & eHealth (ISfTeH). A sidebar on the right lists "Latest News" with links to various announcements, including "Orange Healthcare at Med-e-Tel 2011" and "Med-e-Tel 2011 Call for Abstracts". At the bottom, there is a section for "Med-e-Tel 2011 sponsors" featuring the Orange logo and a section for "Organized by" featuring the ISfTeH logo.



Accreditation

4

- Med-e-Tel provides a wide range of educational opportunities through its extensive program of presentations, panel discussions, workshops and satellite symposia
- **For the fifth consecutive year Med-e-Tel was accredited by the European Accreditation Council for Continuing Medical Education (EACCME) to provide up to 16 hours of European external CME credits for medical specialists**
- EACCME credits are recognized by the American Medical Association towards the Physician's Recognition Award (PRA)

Supporting Organizations (I)

5

- European Commission Information Society & Media Directorate-General
- European Commission Health & Consumer Protection Directorate-General
- European Association of Healthcare IT Managers
- European Health Telematics Association
- International Association of CyberPsychology, Training & Rehabilitation (iACToR)
- International Council of Nurses
- International Medical Informatics Association OS Working Group (Open Source Health Informatics)
- International Telecommunication Union, ITU-D Study Group 2, Question 14 - Telecommunication for eHealth
- Ministry of Health – Luxembourg



Supporting Organizations (II)

6

- Aga Khan University, Pakistan
- American Health Information Management Association
- Armenian Association of Telemedicine, Armenia
- Telemedicine Association of Moldova, Moldova
- Association for Ukrainian Telemedicine and eHealth Development, Ukraine
- Australasian Telehealth Society, Australia/New Zealand
- Austrian Scientific Society for Telemedicine and eHealth, Austria
- CATEL / Réseau de Compétences en Télésanté, France
- National Center for Health Technology Excellence, Ministry of Health, Mexico
- Czech Society for Biomedical Engineering and Medical Informatics, Czech Republic
- Commission on Science and Technology for Sustainable Development in the South Pakistan
- Czech Society for Biomedical Engineering and Medical Informatics, Czech Republic
- Danish Society for Clinical Telemedicine, Denmark
- Deutsche Gesellschaft für Gesundheitstelematik, Germany
- Deutsche Gesellschaft für Telemedizin, Germany
- eHealth Association of Pakistan, Pakistan
- European Federation for Medical Informatics LIFOSS Working Group (Libre/Free and Open Source Software in Health Informatics)

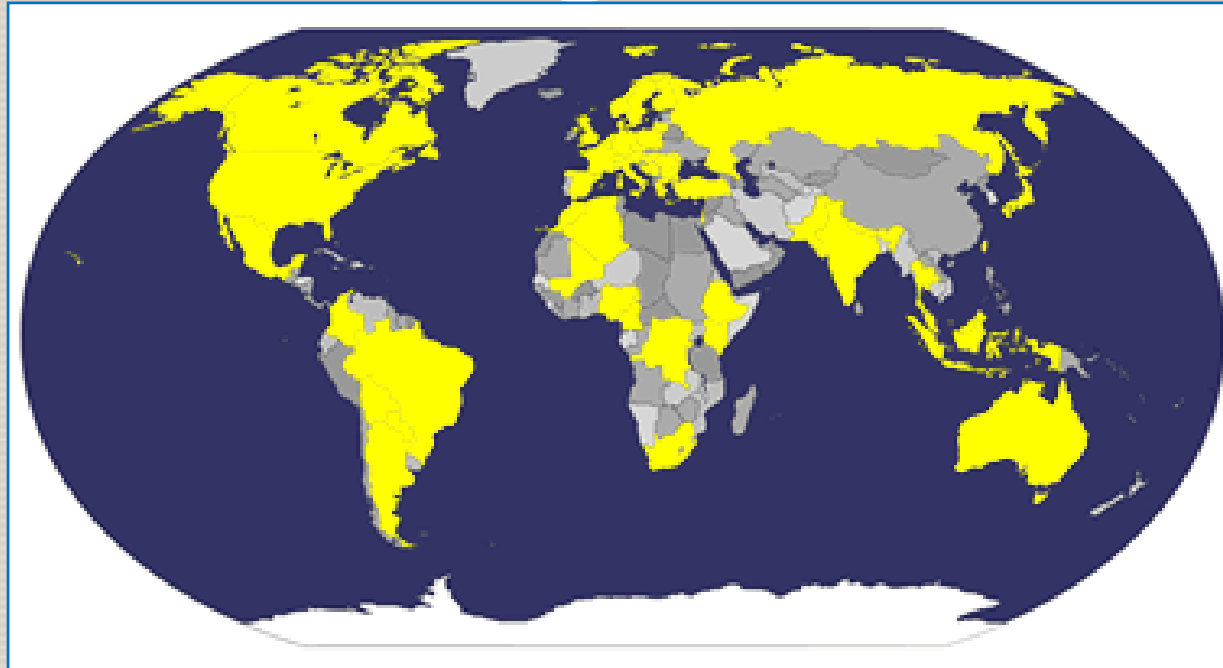


- Finnish Society of Telemedicine and eHealth, Finland
- Fundacion de Telemedicina, Argentina
- Georgian Telemedicine Union, Georgia
- Japanese Telemedicine and Telecare Association, Japan
- Dutch Association of eHealth, Netherlands
- Polish Telemedicine Society, Poland
- Promotion Sociale & Développement en Afrique, D.R.Congo
- Swiss Association for TeleMedicine & eHealth, Switzerland
- Slovenian Medical Informatics Association, Slovenia
- Venezuelan Society of Telemedicine and eHealth, Venezuela
- European Society of Telemedicine and eHealth, France
- Society for Telemedicine and eHealth in Nigeria, Nigeria
- SOMESUL / Associação Médica de São Lourenço do Sul, Brazil
- Space and Solar-Terrestrial Research Institute, BAS, Bulgaria
- Telecare Services Association, UK
- Telemedicine Society of India, India



Participants

7



- ~500 participants
- 56 countries
- 236 oral and poster presentations
- Lists of exhibitors and presentations available at www.medetel.eu
- 42 media partners - www.medetel.eu/index.php?rub=partners&page=media_partners

Participating Countries

8

Algeria
Argentina
Australia
Austria
Belgium
Bhutan
Bolivia
Bosnia & Herzegovina
Brazil
Bulgaria
Cameroon
Canada
Colombia
Congo (R.D.)
Czech Republic
Denmark
Ethiopia
Finland



France
Germany
Greece
Hungary
India
Indonesia
Israel
Italy
Japan
Kenya
Lithuania
Luxembourg
Malaysia
Mali
Mexico
Moldova
Morocco
Nepal
Netherlands



Nigeria
Norway
Pakistan
Paraguay
Poland
Romania
Russia
Rwanda
Serbia
Slovenia
South Africa
Spain
Sweden
Switzerland
Taiwan
Thailand
Turkey
U.K.
U.S.A.

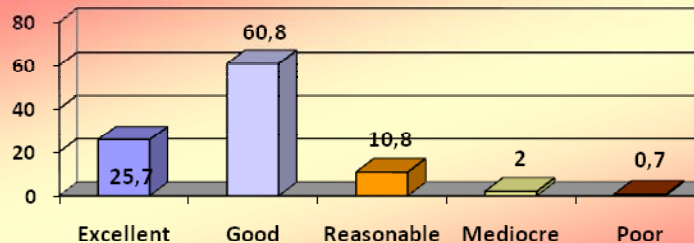


Evaluation

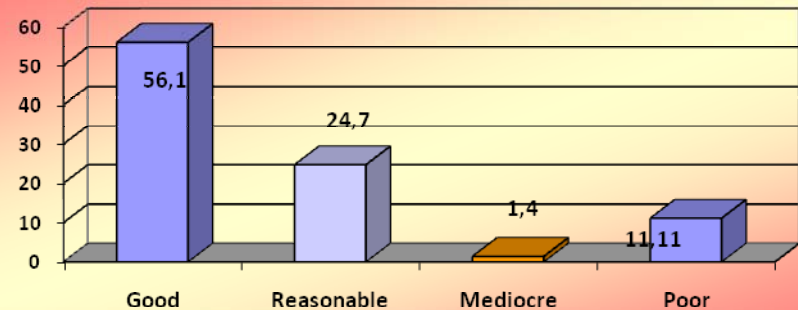
9

- Evaluation Questionnaires were distributed among attendees in order to learn from the experiences and improve the content and quality of future meetings
- Two surveys were performed: an online one, in cooperation with VNU Exhibitions, and one on-site, focused only on medical professionals
- Total number of respondents was 180 or ~36% of the attendees. Participants filled in the questionnaire voluntarily and anonymously

How do you rate the content (addressed subjects) of the conference program?



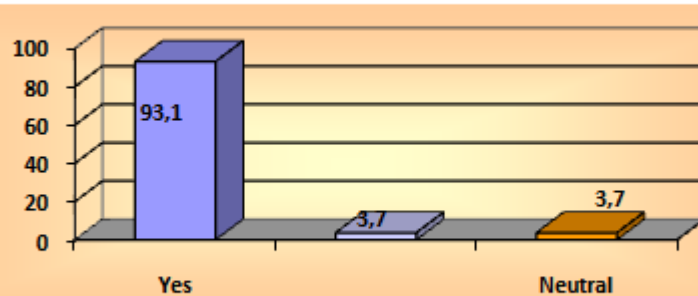
The quality of the speakers was? (%)



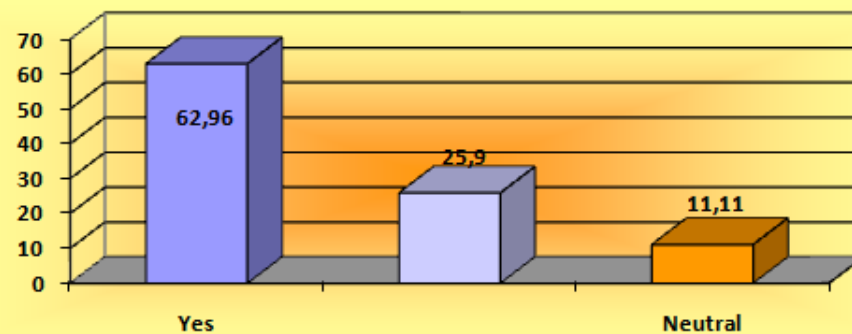
Med-e-Tel Influencing Medical Practice

10

Have I learned something from this event? (%)

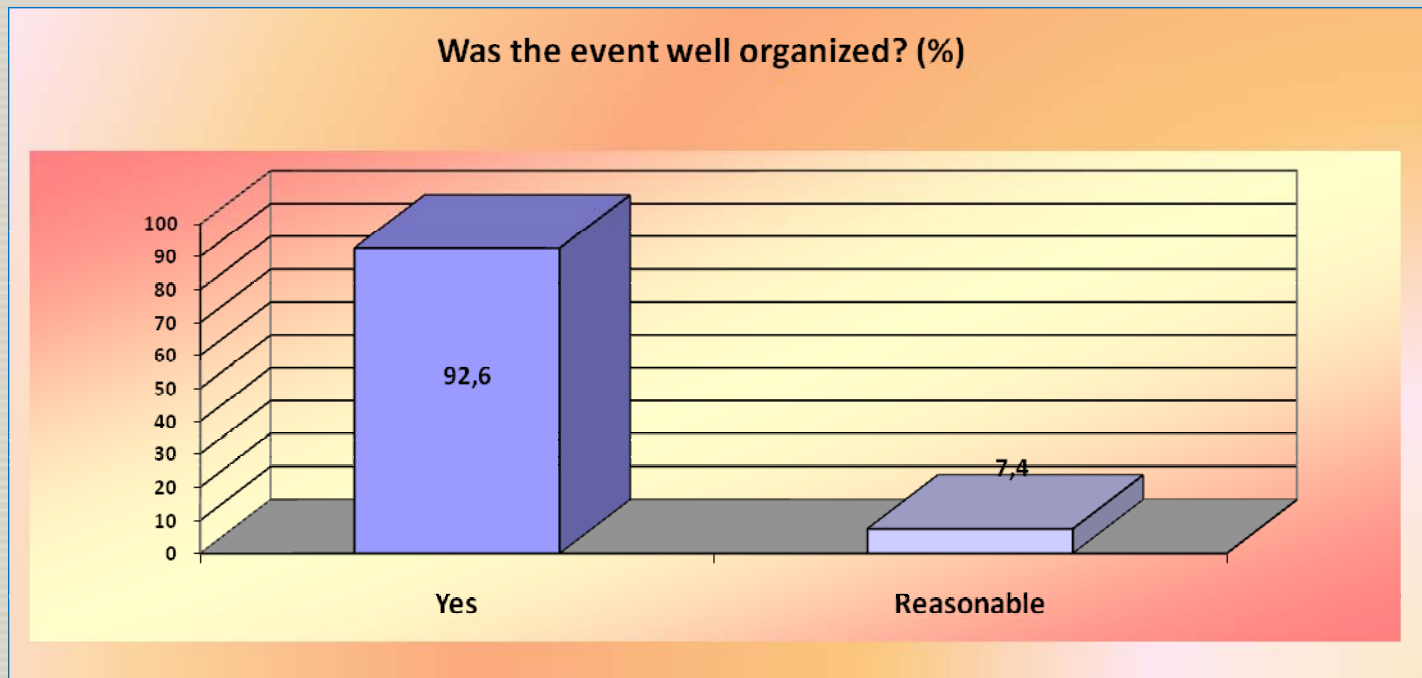


Will the event change my practice? (%)



Overall Organization of Med-e-Tel

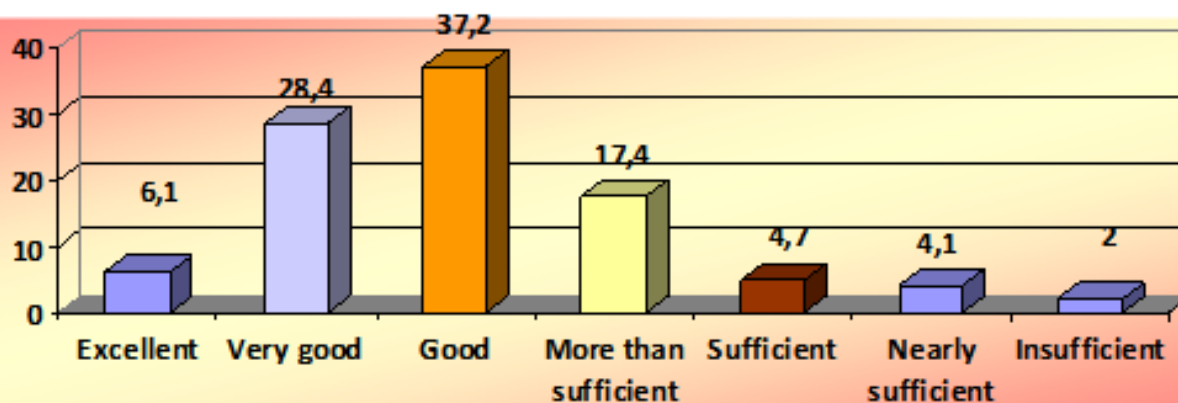
11



Attendees' Satisfaction

12

Which mark would you award to Med-e-Tel in general?



Publications

13

- **Global Telemedicine and eHealth Updates: Knowledge Resources, Vol. 4, 2011**

- 630 pages;
- 350 illustrations, tables and photos;
- 133 papers from 47 countries;
- ISSN 1998-5509

- **Med-e-Tel 2011 Proceedings (CD-ROM)**

- 823 pages;
- 377 illustrations and tables;
- 211 papers from 58 countries;
- ISSN: 1818-9334



Knowledge Resources

A Fantastic Tool To Learn From Existing Experience

14

18-20 APRIL 2012
Med@Tel
LUXEMBOURG
BY ISFTEH

Home News Schedule Contact

Sponsor/Exhibitor Visitor Educational Program Hotel Travel Press Center Partners Proceedings Knowledge Resources

Home: Welcome

Med@Tel

THE INTERNATIONAL eHEALTH, TELEMEDICINE AND HEALTH ICT FORUM For Education, Networking and Business

Med-e-Tel is an official event of the International Society for Telemedicine & eHealth (ISfTeH), the international federation of national associations who represent their country's Telemedicine and eHealth stakeholders.

ISfTeH International Society for Telemedicine & eHealth

Organized by: ISfTeH

Latest News:
Access all presentations from Med-e-Tel 2011
Med-e-Tel 2012 dates announced: 18-20 April 2012
Med-e-Tel 2012 sponsorship and expo opportunities
Med-e-Tel "Knowledge Resources": browse all presentations from 2002 till 2011 (open access)
New website of the International Society for Telemedicine & eHealth at www.isfteh.org



18-20 APRIL 2012
Med@Tel
LUXEMBOURG
BY ISFTEH

Home News Schedule Contact

Sponsor/Exhibitor Visitor Educational Program Hotel Travel Press Center Partners Proceedings Knowledge Resources

Info Year Topic Country Evidence Based Telemedicine/Telehealth

Global Knowledge Resources for Telemedicine & eHealth

Latest News:
Access all presentations from Med-e-Tel 2011
Med-e-Tel 2012 dates announced: 18-20 April 2012
Med-e-Tel 2012 sponsorship and expo opportunities
Med-e-Tel "Knowledge Resources": browse all presentations from 2002 till 2011 (open access)
New website of the International Society for Telemedicine & eHealth at www.isfteh.org

In this "Knowledge Resource" section, you can find references of the presentations that have been made at Med-e-Tel throughout the past years (2002-2011). It is a comprehensive listing providing an overview of Telemedicine and eHealth research, technology, practical experiences and information from around the world, which will be updated year after year with new titles and links.

The information is available sorted per Year, per Topic and per Country, and also includes a list of Evidence Based Telemedicine/Telehealth experiences.

The Year refers to the year the presentation was made at Med-e-Tel.
The Topic section lists the presentations per general topic (such as telecardiology, homecare, developing countries, etc.).
Country refers to the country of the principal author/speaker. Although this classification per country is not as relevant for all presentations (as some cover regional or global issues, or non-country specific data or experiences), it is highly relevant for some of them and allows to search for country specific Telemedicine and eHealth programs or data.
The Evidence Based Telemedicine/Telehealth section provides an overview of presentations that offer evidence of Telemedicine/Telehealth outcomes, i.e. providing an insight into clinical and/or economic effectiveness and efficiency of

Free access to over 1000 abstracts and presentations presented at Med-e-Tel (2002-2011)

Also available: Med-e-Tel proceedings (since 2006)!



18-20 APRIL 2012
Med@Tel
LUXEMBOURG
BY ISFTEH

Home News Schedule Contact

Sponsor/Exhibitor Visitor Educational Program Hotel Travel Press Center Partners Proceedings Knowledge Resources

Info Year Topic Country Evidence Based Telemedicine/Telehealth

Click on the links below to view an alphabetical list of presentations from previous Med-e-Tel events:

- 2011
- 2010
- 2009
- 2008
- 2007
- 2006
- 2005
- 2004
- 2002

Latest News:
Access all presentations from Med-e-Tel 2011
Med-e-Tel 2012 dates announced: 18-20 April 2012

18-20 APRIL 2012
Med@Tel
LUXEMBOURG
BY ISFTEH

Home News Schedule Contact

Sponsor/Exhibitor Visitor Educational Program Hotel Travel Press Center Partners Proceedings Knowledge Resources

Info Year Topic Country Evidence Based Telemedicine/Telehealth

- Albania
- Algeria
- Argentina
- Armenia
- Australia
- Austria
- Bahrain
- Belgium
- Bolivia
- Bosnia and Herzegovina
- Brazil
- Bulgaria
- Burkina Faso
- Cambodia
- China
- Croatia

Latest News:
Access all presentations from Med-e-Tel 2011
Med-e-Tel 2012 dates announced: 18-20 April 2012
Med-e-Tel 2012 sponsorship and expo opportunities
Med-e-Tel "Knowledge Resources": browse all presentations from 2002 till 2011 (open access)
New website of the International Society for Telemedicine & eHealth at www.isfteh.org

The Evidence Based Telemedicine/Telehealth section provides an overview of presentations that offer evidence of Telemedicine/Telehealth outcomes, i.e. an insight into clinical and/or economic effectiveness and efficiency of Telemedicine/Telehealth applications.

The current list contains presentations that were made at Med-e-Tel 2011. The list will be updated with additional presentations from previous editions of Med-e-Tel as well. Check back soon.

18-20 APRIL 2012
Med@Tel
LUXEMBOURG
BY ISFTEH

Home News Schedule Contact

Sponsor/Exhibitor Visitor Educational Program Hotel Travel Press Center Partners Proceedings Knowledge Resources

Info Year Topic Country Evidence Based Telemedicine/Telehealth

- Aging Services Technologies
- Benefits of Free/Libre Open Source Software
- Biotechnology
- Chronic Disease Management
- Decision Support Systems
- Dermatology
- Developing Countries and Low Resource Settings
- Disability and Assistive Technology
- Disease Management
- Disease Consultations
- Distance Education
- Economy Effect and Benefits
- Emergency Medicine and Disasters
- ePharmacy
- Emergency Medicine and Disasters
- ePharmacy
- Ethics, Law, User Needs
- eLearning, eGovernment, eHealth and eHealthcare

Latest News:
Access all presentations from Med-e-Tel 2011
Med-e-Tel 2012 dates announced: 18-20 April 2012
Med-e-Tel 2012 sponsorship and expo opportunities
Med-e-Tel "Knowledge Resources": browse all presentations from 2002 till 2011 (open access)
New website of the International Society for Telemedicine & eHealth at www.isfteh.org

18-20 APRIL 2012
Med@Tel
LUXEMBOURG
BY ISFTEH

Home News Schedule Contact

Sponsor/Exhibitor Visitor Educational Program Hotel Travel Press Center Partners Proceedings Knowledge Resources

Info Year Topic Country Evidence Based Telemedicine/Telehealth

Antony R. (2011) Clinical Calibration of Home Monitoring Devices for Telehealth: A Component of the HeartCycle Programme (abstract) [full presentation]

Latest News:
Access all presentations from Med-e-Tel 2011
Med-e-Tel 2012 dates announced: 18-20 April 2012
Med-e-Tel 2012 sponsorship and expo opportunities
Med-e-Tel "Knowledge Resources": browse all presentations from 2002 till 2011 (open access)
New website of the International Society for Telemedicine & eHealth at www.isfteh.org

18-20 APRIL 2012
Med@Tel
LUXEMBOURG
BY ISFTEH

Home News Schedule Contact

Sponsor/Exhibitor Visitor Educational Program Hotel Travel Press Center Partners Proceedings Knowledge Resources

The complete Med-e-Tel 2006 Proceedings can be viewed and downloaded here:
To order an original (black or CD) copy of the Med-e-Tel 2006 Proceedings, identified and added the order form:
The Med-e-Tel 2006 Proceedings are available as a hard copy (black or CD) copy (ISBN: 978-3-03-910-133-9) and also electronically on CD-ROM (ISBN: 978-3-03-910-133-9).

The complete Med-e-Tel 2007 Proceedings can be viewed and downloaded here:
To order an original (black or CD) copy of the Med-e-Tel 2007 Proceedings, identified and added the order form:
The Med-e-Tel 2007 Proceedings are available as a hard copy (black or CD) copy (ISBN: 978-3-03-910-133-9) and also electronically on CD-ROM (ISBN: 978-3-03-910-133-9).

The complete Med-e-Tel 2008 Proceedings can be viewed and downloaded here:
To order an original (black or CD) copy of the Med-e-Tel 2008 Proceedings, identified and added the order form:
The Med-e-Tel 2008 Proceedings are available as a hard copy (black or CD) copy (ISBN: 978-3-03-910-133-9) and also electronically on CD-ROM (ISBN: 978-3-03-910-133-9).

Organized by: ISfTeH
Sponsored by: EHTeL

Press Coverage


15

18-20 APRIL 2012

Med@Tel

LUXEMBOURG
BY ISFTEH 10th EDITION

THE INTERNATIONAL eHEALTH, TELEMEDICINE AND
HEALTH ICT FORUM For Education, Networking and Business



JOIN US NEXT YEAR

Organizer
ISFTEH
International Society for
Telemedicine & eHealth

www.medetel.eu

See you at Med-e-Tel 2012 – 10th edition!

18-20 April 2012
Luxembourg

Sign up for the Med-e-Tel newsletter at
www.medetel.eu
to receive Med-e-Tel updates as well as
other Telemedicine and eHealth news